



La Playa Cooperative Nursery School helps build communities, beginning with the family. La Playa helps parents join their children during the school day to play and learn alongside them. Join your child for their first school experience.

Parents regularly assist at the school, typically one day a week

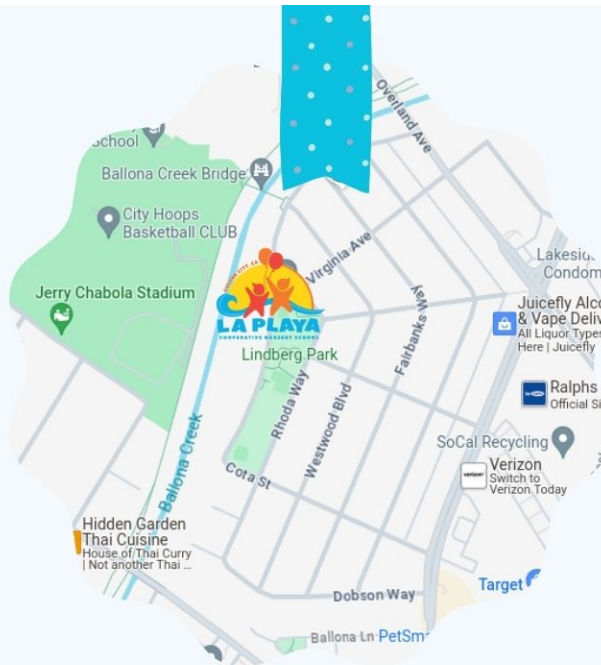
Parents are provided monthly education seminars with childhood and family experts

Parents participate in school and community events, hold committee positions, and help with fundraising

La Playa is a member of the Los Angeles Council of Parent Participation Nursery Schools (LACPPNS) and the California Council of Parent Participation Nursery Schools (CCPPNS)

La Playa Nursery School does not discriminate on the basis of race, color, religion (creed), gender, gender expression, age, national origin (ancestry), disability, marital status, sexual orientation, or military status in any of its activities or operations

La Playa Nursery School is a non-profit  
501(c)(3) corporation  
Tax ID: 95-1945773  
D.S.S. Facility #191600388



**La Playa Cooperative Nursery School**  
5041 Rhoda Way  
Culver City, CA 90230

## Contact us

310.839.1579  
[info@laplayacooperative.com](mailto:info@laplayacooperative.com)  
[laplayacooperative.com](http://laplayacooperative.com)

Mailing address  
P.O. Box 3464  
Culver City, CA 90231



**A play-based program in a spacious facility**

**Focus on social and emotional development**

**Parent participation and parent education**

**Experienced teachers**

**Nominal tuition**

**Helping hundreds of families since 1948!**





La Playa is a parent-run, non-profit, cooperative preschool for children ages two to five years old.

La Playa started as a play group in Culver City in 1948 and, soon after, moved to its current location. La Playa is one of the longest-running cooperative preschools in the country.

La Playa focuses on fostering children's self-esteem, confidence, and social skills through a developmental curriculum and supportive community.



**Experienced staff**



**Daily circle time lessons**

**Spacious facility**



**Art every day**

**Huge selection of books**



**Half-day program**



**Healthy snacks**



**Lots of free play**



**Weekly music classes**



**Movement classes**



**Gardening**



**Field trips**



**Science projects**



**Parent involvement**



is at the heart of **La Playa**

## La Playa's Schedule

8:30 a.m. Early drop-off (optional)

9:00 Workday parents arrive with their children, receive parent education session with teachers, and help set up for the school day

9:30 Drop-off time for all children  
Free Play

10:00 Circle Time  
Music Time (weekly)  
Movement Class (weekly)

10:25 Snack Time

10:45 Free Play

11:55 Clean-up Time

12:05 p.m. Book Time

12:15 Lunch Time for children while workday parents meet with teacher to discuss the school day

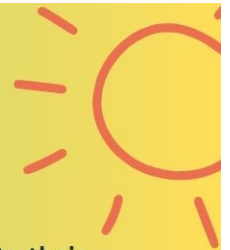
12:30 Dismissal



**"We learn through play in a meaningful way."**

Teacher Teri Avila,  
Director, La Playa

## The benefits of a co-op school:



\*Parents actively contribute to their children's education and community

\*Parents observe their child's strengths and weaknesses by seeing what they're experiencing in a school environment

\*Each child learns to interact with many adults and children of different ages

\*An increased amount of adults on site leads to a high adult-to-child ratio



\*Grownups gain a built-in support system by getting to know other families

\*Families have access to weekly lessons about preschool-aged children, monthly parent education seminars, and a personal relationship with the child's teachers.

\*As a non-profit, a co-op school is parent-run, with an elected executive board comprised of parents working together to help make the school and its community an inviting, educational, and helpful place.

**"La Playa isn't just a learning opportunity for the children. It's also for their families."**

Teacher Mayra Ybarra

